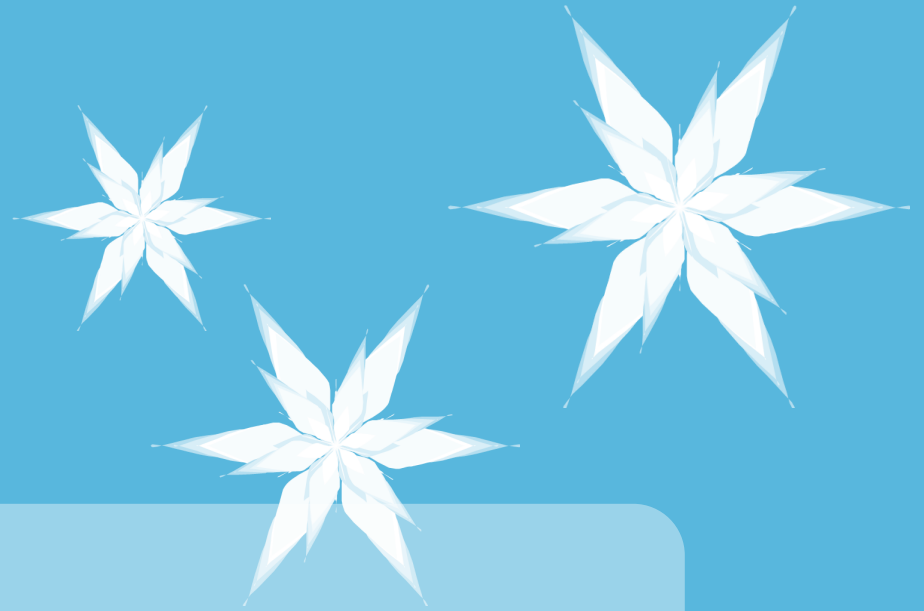


WINTER LOAN SPECIAL

Dec-Jan 2022



2.00% APR* DISCOUNT

Off your qualified rate on
personal loans up to \$5000
thru January 2022.

*APR=Annual percentage rate. Rate discount applies for new loans only Current rates are based on credit worthiness. Discount will be applied to current rate sheet effective June 1, 2021. . Loans are subject to credit approval. Not all members will qualify. No refinancing of existing SPFCU loans. Rates are subject to change without notice. **Max loan is \$5000.00 Max term is 36 months** Offer expires January 31, 2022. Member must close loan before January 31, 2021 to receive discounted rate. Example loan payment: \$5000.00 for 36 months at 7.00% will be \$154.40.

